

Charming Sewerage Specialist Care Arrangement Using Embedded System

M. Anitha Mary¹, R. Bharathy², U. Jhanani Shree³, R. Surender⁴

^{1,2,3,4}Assistant Professor (SS), Department of Electronics and Communication Engineering, Rajalakshmi Engineering College, Chennai, India.

¹anithamary.m@rajalakshmi.edu.in, ²bharathy.r@rajalakshmi.edu.in, ³jananishree.u@rajalakshmi.edu.in, ⁴surendar.r@rajalakshmi.edu.in

Abstract

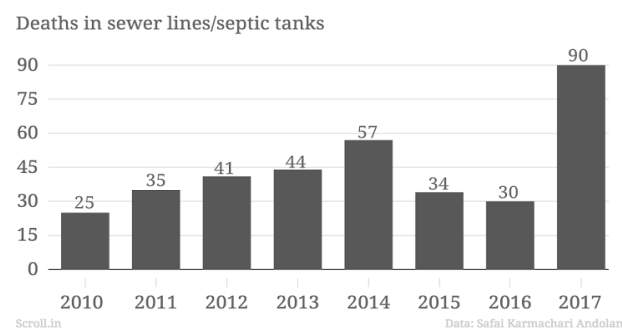
Sewerage system plays an important role to keep the city clean. The outdated drainage intensive care scheme unsuccessful to recognize in the pitch of forewarning the community about the gas ignition, growth in the ground water level and the unlocked lid. These arrangement straight effects on well being problems of inhabitants and wage earner who cleans the subversive drainage. The anticipated system is less expensive, less preservation, prolonged life expectancy and system constructed genuine stretch system, which keep posted the civic brigadier by type script communication when in the least manhole Greek cross the dawn value. Thus, the projected arrangement forecasting the hazardous conditions in drainage system.

Keywords: Gas Explosion, Health Issues, Manhole.

DOI: 10.47750/pnr.2022.13.S03.113

INTRODUCTION

Sewerage be situated the arrangement otherwise procedure by which liquid, manure or other liquors stand exhausted beginning a residence. Before the 1930s sewage assortment system used solitary assembling pipes to both municipal overflow and sewage. This is known as shared drain system (CSS). In order to enable the arrangement of sewage it should be inclined in the accurate way. More than 1.3 billion inhabitants exist in India. Wildernesses are the one which cultivates with the evolution of the country so discrimination of waste is important entity to do. For proper clearance of waste, it is essential to replace the current system equivalent managing station via spreader located in that area.



A



Fig 1. Drainage with manual workers

In this system, there are three sensors used and are mentioned below.

1. Float sensor
2. Flow sensor
3. Gas sensor
4. Temperature sensor

EXISTING SYSTEM

At present the impassable drains are empty with the support of labour-intensive employees. The employees have to become into the drains and physically remove the consumptions and the employees may be infested with destructive diseases. Some interposes the consistent life of the communities and also estates air contamination. At present forced pumps are used to eradicate clog in some belongings but only if the level of the drainage influences its

highest, so the predominant system have deadly smokes in the gutter may cause detrimental side possessions in worst case it may central to death. Some of the deadly gases are hydrogen sulphide, sulphuric acid, ammonia, methane, ester, carbon detached and substituting it with the projected system.

PROPOSED SYSTEM

Sensor, temperature using temperature device and injurious

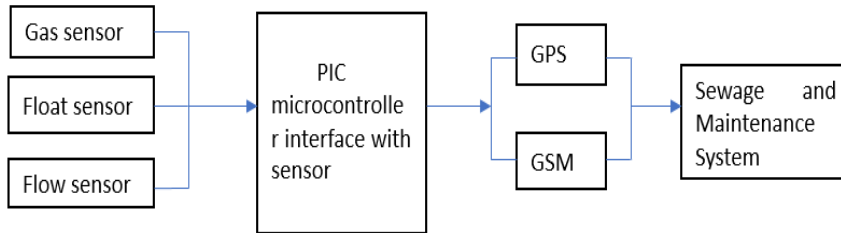


Fig 2. Block diagram

HARDWARE DESIGN

a) Float sensor

Aquatic close instrument comprises of a soft controller physique, a water air foil, and a gallery-effect organ. As soon as aquatic streams complete the propeller, propeller spools. The subject rapidity variations through a changed proportion of drift. The public room-consequence beam harvests the agreeing rhythm indicator. This single is appropriate to perceive movement popular water in the sewerage. Water side by side sensor is used to distinguish the level of ingredients such as constituents embrace liquids, slurries, granular factual and residue that container stream. Through exploitation this feeler by numerous places, area of water escape can inter stay acknowledged besides explained.

b) Flow radar

Water stream instrument be situated used to perceive the rate of flow of water. Stream beam necessitates a large quantity of water supply. It is also used to estimate the quantity of water flowed complete the pipe. It works on the opinion of Hall Effect. In this sensor a electrical energy difference is encouraged in the conductor due to the rotation of the rotor. The water flow sensor can be second-hand with scorching liquid, unfriendly aquatic, sparkling river, muddy liquid.

c) Gas sensor:

Dual Gas sensors stand hand-me-down. It is used to perceive the occurrence of hazardous Carbon monoxide and standard blast. First sensor partakes a high compassion and fast reaction time. It varieties uncovering by method of rotation high and low malaise and CO when short

gases using smoke sensor are proposed. With the help of these feelers, it is relevant to detect the sabot if any present in the sewerage system and it is possible to eradicate this clog to avoid the contaminated location and to save the administrations time. Supplementary, used GPS (Global Positioning System) and GSM (Global System capability). With the support of the GPS the position of the clog is perceived and GSM is used to send the evidence to the sewage and preservation system.

temperature. Second sensor is used in air value control apparatus. It distinguishes the smoke, benzene, steam and other harmful gases. Smoke sensors are available in inclusive specifications dependent on the sensitivity levels, category of gas to be distinguished, physical dimensions and numerous added influences. This Intuition covers a methane gas sensor that cans intellect gases such as ammonia which might get fashioned from methane. When a gas cooperates with this sensor, it is first ionized into its ingredients and is then adsorbed by the detecting element. This adsorption creates a probable difference on the Element which is transported to the processor unit complete output pins in method of contemporary.

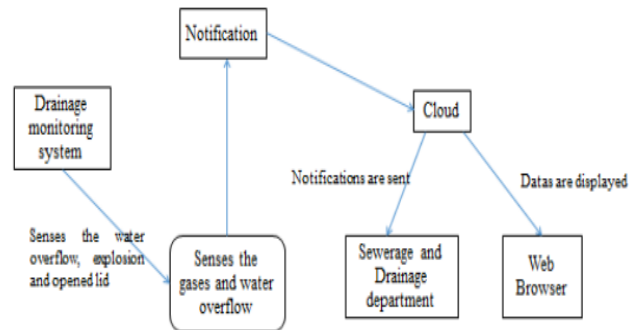


Fig 3. Gas Sensor

d) Temperature sensor

Temperature instrument is a device used to quantify the hotness or coldness of an entity. This sensor is to acquire the temperature subversive.

e) PIC Microcontroller

PIC microcontrollers are reliable and faulty of PIC proportion is very fewer. The concert of the PIC microcontroller is self-same fast because of exploitation RISC construction. When associating to other microcontrollers, authority consumption is very fewer and software design is also very easy. Interfacing of an analog device is easy deprived of any extra electrical structure.

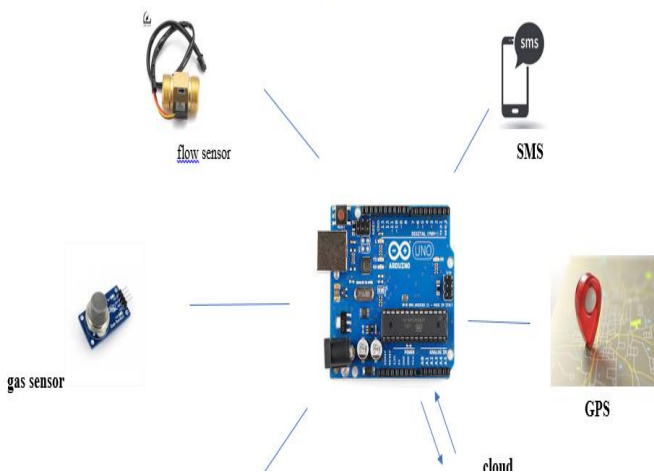


Fig 4. PIC Microcontroller

RESULTS AND OUTPUT

Sensitivity graph has been plotted and observed. All of the results were recorded the exact values of the pipeline inside which it was placed.

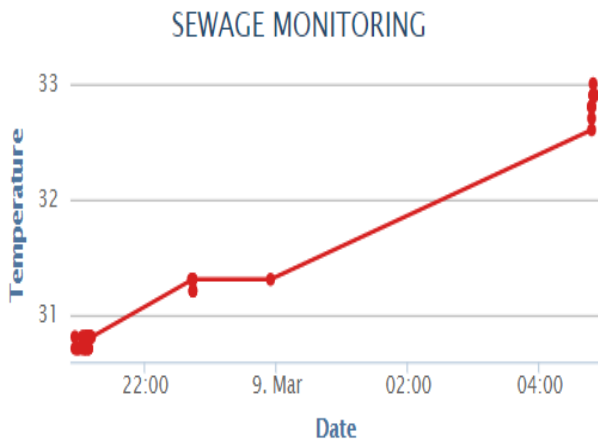


Fig 5. Temperature sensitivity Graph

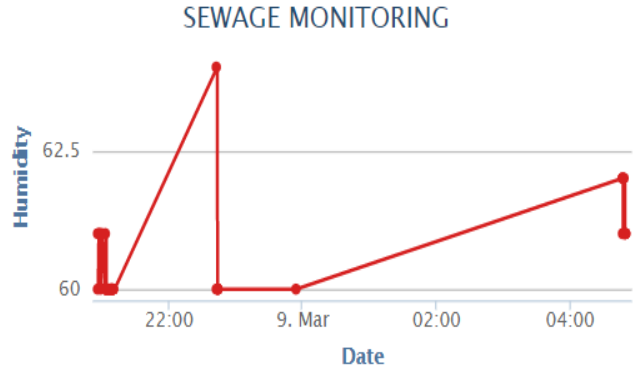


Fig 6. Humidity sensitivity Graph

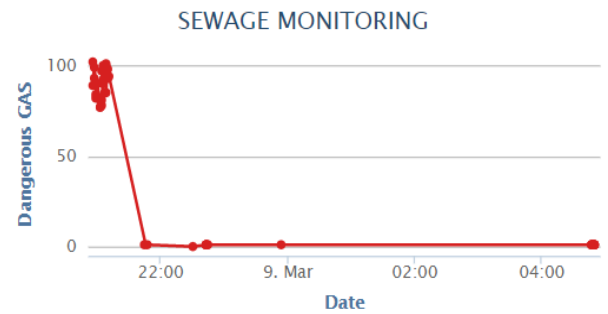


Fig 7. Dangerous GAS sensitivity Graph

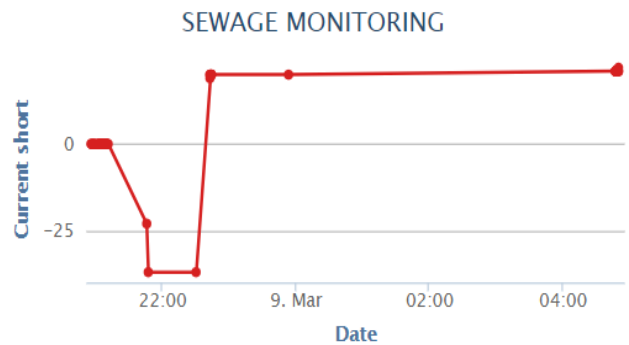


Fig 8. Current short graph

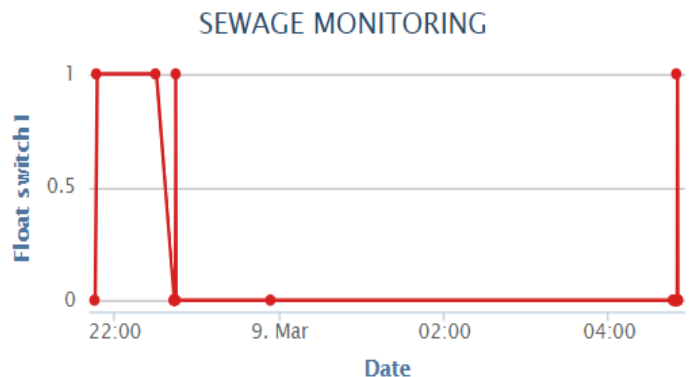


Fig 9. Float switch graph

FUTURE SCOPE

Having implemented this paper springs, the subtraction of clog from the sewage system. Also, it can be supplementary developed by advanced machineries for better enhancements. The extermination of the clog is completed by using chemicals in the drainage pipes. In addition to that, the deletion of clog can be destroyed using robots. Instead of eradicating manually, the clog can be unconcerned using robots to avoid threats to humans.

CONCLUSION

Thus, the paper purposes to create a innocent and healthy atmosphere by creating a shrewd sewerage system. The decisive role of this paper is to clear the clog global time and cost is reduced. This proposed paper is to display and eradicate the clog robotically.

REFERENCES

- Prof S. A. Shaikh, Suvarna A. Sonawane, "Monitoring Smart City Application Using Raspberry PI based on IoT" International Journal of Innovative Science, Engineering & Technology, Vol 5 Issue VII, July 2017.
- Y. Yu, H. Guan, Z. Ji, "Automated Detection of Urban Road Manhole Covers Using Mobile Laser Scanning Data", pp. 1-12, 2015.
- Prof Muragesh SK, Santhosha Rao, "Automated Internet of Things for Underground Drainage and Manhole onitoring Systems for Metropolitan Cities." International Journal of Innovative Science, Engineering & Technology, Vol. 2 Issue 4, June 2015.
- Z. Yang, L. Liu, W. Yang, and Y. Zhang, "Monitoring and control system of crankshafts NC machining based on configuration software," *Manufacturing Technology & Machine Tool*, 01, pp. 135-139, 2010.
- S. Fu, Q. Zhu, "The Study on Remote Monitoring of Running State and Fault Early Warning of Mine Fan," *China Coal*, 04, pp. 44-46, 2008.